



CONFERENCE FOR CATHOLIC FACILITY MANAGEMENT

Program

May 6 – May 8, 2013

CCFM

Creating Solutions For A Challenging Future

St James Cathedral
Seattle, Washington

CONFERENCE FOR CATHOLIC FACILITY MANAGEMENT

Seattle, Washington

May 6 – May 8, 2013

The Westin Seattle

Hosted By

Archbishop J. Peter Sartain, D.D., S.T.L.
Archdiocese of Seattle

Most Reverend Roger Foy, D.D.
Episcopal Moderator

Peter Silva
President
Diocese of Manchester/Archdiocese
of Boston

Ed Foster
Vice President and Planning Chair
Archdiocese of Seattle

Rev. Mr. Guy A. Piche
Treasurer
Diocese of Charlotte

Paul Connery
Secretary
Archdiocese of Hartford

Thomas Richter
Executive Director
Archdiocese of St. Louis

Lou Baird
The Redemptorist Fathers

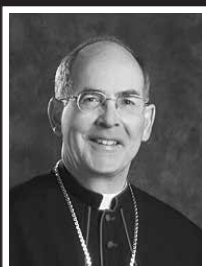
Rob Bennett
Diocese of Pensacola-Tallahassee

Doug DuRivage
Diocese of Fresno

Joe Novoa
Diocese of Orange

Andre Villere, Jr.
Archdiocese of New Orleans

ARCHBISHOP OF SEATTLE



**Archbishop J. Peter
Sartain, D.D., S.T.L.**
Archdiocese of Seattle

visit our website: <http://www.ccfm.net>

STATEMENT OF PURPOSE

Mindful of their special ministry in the Roman Catholic Church in facilities and real estate matters, the members of the CCFM united to be of service to the Church in the ministry of facilities and real estate concerns. In particular, this organization promotes the spiritual growth of its membership; promotes facilities and real estate knowledge and expertise in service to the local and national Church, facilitates the exchange of ideas and information through personal contacts, quarterly newsletters, member forum and annual conference.

Contents

Letter of Welcome from

Archdiocese of Seattle 4

Program Schedule 5

Featured Speakers 10

Exhibitor Booth Locations 14

Exhibitor Information 15

Hotel Conference Room Layout. 18

ARCHDIOCESE OF SEATTLE



710 9TH AVENUE
SEATTLE, WA 98104-2017
www.seattlearchdiocese.org

Dear Conference Attendee,

On behalf of Archbishop Sartain, and CCFM, I welcome you to the Archdiocese of Seattle. The Archdiocese has a rich history dating back to 1846, originally as part of the Vicariate of Oregon City. Currently the Archdiocese comprises the western third of Washington State, spanning from the Cascade Mountains to the Pacific Ocean, and from Canada to the Columbia River.

Seattle is a major metropolitan port city. While you are here, please take a moment to walk to the waterfront. You will encounter Puget Sound and off to the distance the Olympic Mountains. The Pacific Northwest holds countless reminders of God's glory in creation. It is a pleasure to have you here and if there is anything I can do to assist in an enjoyable visit, please don't hesitate to see me.

Sincerely,

Ed Foster
Archdiocese of Seattle

Saturday, May 4

8:00am

Golf Outing – Druids Glen Golf Course

Sunday, May 5

All Day

Arrive at Leisure

9:30am or 7:00pm

Opportunity to participate – Scheduled Parish Mass – Christ Our Hope Catholic Church, 1902 Second Avenue

1:00pm to 7:00pm

Registration Desk Open**Grand Registration**

2:00pm to 5:00pm

CCFM Board of Directors Meeting**Whidbey**

Monday, May 6

7:00am to 5:00pm

Registration Desk Open**Grand Registration**

7:00am to 6:00pm

Internet Café Open**Grand Foyer**

7:30am to 8:15am

Board of Directors meet new members / coffee hour**Grand Crescent**

8:30am to 10:00am

Welcome to Archdiocese of Seattle by**Fifth Avenue****Archbishop J. Peter Sartain and Keynote Address Breakfast**

Archbishop J. Peter Sartain, D.D., S.T.L., Archdiocese of Seattle will address the members of CCFM and share some welcoming thoughts with us. Following, we will hear from Rick Fersch, Executive Director – Stewardship and Development Office, Archdiocese of Seattle on: "IS IT JUST ME? A businessman's reflections on working for the Church! Most of us worked in the private sector before we started to work for our diocese or religious order, and today we will hear the thoughts and reflections of the former CEO of Eddie Bauer, and his transition into working for the church.

9:45am to 3:00pm

For Your Guest / Spouse – City Tour and Harbor Cruise

You will meet your guide in the Westin Seattle lobby at 9:45 am. On the first part of your tour, sit back and relax in a spacious coach as a knowledgeable tour guide presents Seattle's neighborhoods and attractions. You will see and hear more about: Pike Place Market, Olympic & Cascade mountain views, Seattle waterfront, Historic Pioneer Square, Waterfall Garden Park, Klondike Gold Rush National Historical Park, Safeco & Qwest stadiums, Chinatown and International District, Lake Washington, I-90 Floating Bridge, Mercer Island, Puget Sound views, Panoramic Seattle city views, Fremont neighborhood & Troll, Lake Union & Ship Canal, Space Needle, Seattle Center & E.M.P.

This tour will include stops at Pioneer Square, and a great city skyline photo opportunity. After some time on your own to stretch your legs and grab lunch (not included), you will enjoy an Argosy Cruise 1-hour tour of Seattle's vibrant and historic harbor. With never-ending skyline views and wide-open outdoor decks, this fascinating tour is perfect for visitors. Some of the highlights you'll see: the colorful waterfront, the spectacular city skyline, one of the world's largest shipping terminals, the majestic Cascade and Olympic mountain ranges.

Monday, May 6

10:30am to 12:00pm

Three Concurrent Sessions Tracks 1, 2 and 3**Track 1 - Case study of the site development strategy****Vashon**

used in 2010 to develop the new Blessed Teresa of Calcutta Parish in Washington State, which is on a very small site with stringent site development requirements imposed by the local ordinance.

Speakers: Kevin Broderick, Broderick Architects; Steve Porter, Coughlin Porter and Lundeen; and Rick Tomkins, Triad Associates

Subject: Study will focus on site development issues related to the construction of a new 600-seat church. The local development standards required very stringent storm water / site development requirements, but the parish and design team were able to mitigate some of these requirements through a creative permitting process that reduced the site development costs and allowed the parish to construct on a site that was considered unbuildable.

Track 2 - Restoring, maintaining and repairing stained glass windows.**Grand 1**

Speaker: Ron Bovard, Bovard Studio, Inc.

Subject: During this program, the presenter will define stained glass restoration versus repair and maintenance, explain why stained glass windows fail, define what comprises stained glass restoration and the techniques used, explain how to properly design exterior protective glazing systems, explain how to document the restoration process, and define safety and environmental exposures and practices for leaded stained glass restoration.

Track 3 - Building commissioning process for energy conservation at parishes and schools.**Grand Crescent**

Speaker: Rick Casault, Casault Engineering

Subject: Learn how the building commissioning process achieves your energy conservation goals in new construction and existing buildings, while also delivering other operational and quality improvements. Typically, improvements implemented during the commissioning work pay for the cost of commissioning before the final report lands on your desk.

12:15pm to 1:45pm

Lunch and Annual Business Meeting**Fifth Avenue**

2:00pm to 3:30pm

Tracks 1, 2 and 3 – sessions repeated

2:00pm to 3:15pm

Exhibitors and Sponsors Network with Each Other over Refreshments**Puget Sound Room**

Hosted by: Most Reverend Roger Foys, Episcopal Moderator and Thomas Richter, Executive Director CCFM

3:30pm to 6:30pm

Exhibits open / Refreshments with Members**Grand 2 and 3**

Tuesday, May 7

7:00am to 9:00am

Breakfast**Fifth Avenue**

7:00am to 5:00pm

Registration Desk Open**Grand Registration**

7:00am to 6:00pm

Internet Café Open**Grand Foyer**

Tuesday, May 7

8:00am to 9:00am

CCFM Mass with Bishop Roger Foy**Christ Our Hope Catholic Church**

1902 Second Avenue

Christ Our Hope is a newly established parish in downtown Seattle. This parish is situated in the ground floor of the 14 story Josephinum, constructed in the early 1900's as the Washington Hotel. When it was built, the Washington Hotel was one of the grandest hotel's west of the Mississippi. In the 1980's, Catholic Housing Services purchased this building as part of their permanent housing program. Now, the parish and the housing services jointly share this historic lobby. The Church was dedicated in 2010 and recently completed the parish office renovation. This parish offers a unique partnership between the church and its mission to minister to those in need. Following mass today, you will have an opportunity to tour the renovation. A host will be available at 7:30 am if you arrive early and wish to have a brief tour prior to Mass.

9:30am to 11:00am

Three concurrent sessions Tracks 4, 5 & 6**Track 4 - Practical Accessibility Compliance / 2010 ADA****Vashon****Standards Compliance at Religious and Religious-Owned Facilities.**

Speaker: William Endelman, Endelman & Associates PLLC (E&A)

Subject: The various standards for accessibility compliance are necessary for industry professionals to use, but can be somewhat complicated and confusing. This seminar focuses on clarifying the application of the various standards (FHA, ADA, UFAS, IEC / ANSI), and the seminar will specifically address the requirements for religious facilities and facilities owned by religious entities. The seminar will explore the "Dirty Dozen" most common issues in accessibility compliance. E&A will address how to solve some of the most common issues in design and in the field, using a PowerPoint presentation with photos and on the fly sketches. The 2010 ADA Standards, fully enforceable by the U.S. Department of Justice effective 3/15/12, adds some new scoping areas and revises some technical requirements. This seminar will help you understand some of the most significant changes from the original 1991 Standards, and provide some practical advice. E&A will help provide you a good risk management perspective and ways to minimize risk.

Track 5 - An advanced method for assessing wood lath and plaster ceilings in historic churches and heritage buildings.**Grand 1**

Speakers: Rod Stewart, John Tiedemann, Inc. / Historic Plaster Conservation Services Limited (HPCS):

Subject: Participants will learn how to safely access and work within the attic side of historic wood lath and plaster ceilings, and how to methodically assess and quantify the condition of a plaster ceiling system as a whole.

Track 6 - Preliminary assessments of existing facilities conditions. Grand Crescent

Speaker: R. Gregory Turner, Turner Duran Architects

Subject: Systematic approach to recording and evaluating conditions of existing facilities, as a prerequisite to preliminary decision-making regarding long term viability of structures for reuse and/or adaptation.

Tuesday, May 7

9:30am to 11:00am

Breakout Session – A Roadmap for Catholic Sustainability**Whidbey****Planning and Development** *This session is not AIA accredited.*

Presenters: Lou Ann Wright, Diocese of Pittsburgh; Jerry Lawson, Energy Star for Congregations; Ryan Snow, U.S. Green Building Council

Moderator: Dan Misleh, Catholic Coalition on Climate Change

Subject: This workshop will explore how the Diocese of Pittsburgh is successfully integrating sustainability practices through small steps, building trust among decision makers and working collaboratively with city, business and faith leaders. Top leaders from Energy Star and US Green Building Council will share resources and programs to ensure significant money savings and success as your diocese (including parishes, schools, hospital systems and other facilities) considers sustainability projects and enhances human well-being. Last year's keynoter, Dan Misleh, will moderate the panel and connect these efforts with our Catholic mission and identity.

11:00am to 1:30pm

Exhibits Open**Grand 2 and 3**

12:00pm to 1:30pm

Networking Lunch with Exhibitors**Grand 2 and 3**

1:00pm to 1:15pm

Raffle of Exhibitor Prizes**Grand 2 and 3**

1:30pm to 3:00pm

Tracks 4, 5 and 6 – sessions repeated

3:00pm to 3:30pm

Break**Grand Foyer**

3:30pm to 5:00pm

Three Concurrent Sessions Tracks 7, 8, & 9**Track 7 – Introduction to standing seam metal roofs.****Vashon**

Speaker: Jerry Mendelsohn, Custom-Bilt Metals

Subject: A brief history of standing seam metal roofs, and the ecological benefits of metal roofing. This course will discuss metal roof panel types, structural panels, architectural panels, panel profiles, testing, roofing materials and finishes, wind loads, clip attachments, and the expansion and contraction of different metals.

Track 8 – Sustainable lighting in today's churches and religious-based facilities.**Grand 1**

Speakers: Martin and Edwin Rambusch, Rambusch Decorating Company

Subject: Lighting is a very low-cost avenue by which to reduce building operating costs, and new, energy efficient technologies continue to evolve. However, an efficient light bulb does not guarantee savings. Through interactive discussion and a review of case studies, we will discuss the pros and cons of yesterday's and today's light sources, their appropriate applications, and finally, creating the desired illuminated atmosphere within the church and religious environment.

Track 9 – High performance precast / prestressed concrete.**Grand Crescent**

Speaker: Brian Miller, Precast / Prestressed Concrete Institute

Subject: Sustainability has impacted the construction industry in profound ways and has shifted thinking about how we design and build structures. We are now seeing a broader view as sustainability has been expanded to high performance concrete. High performance structures go beyond being built sustainably to include other aspects such as resiliency, and a focus on long-term performance – and facilities managers are wise to take notice. This presentation will address sustainable, high-performance design using precast / prestressed concrete products and envelope systems

Tuesday, May 7

as an example. This session will define what high performance building envelopes are and will discuss how to use precast concrete wall systems to meet high performance building envelope requirements. Topics such as moisture management, air barriers, thermal mass, R-value, integration with other building systems, aesthetic finishes, and more will be introduced and explained.

5:15pm to 5:45pm

Board of Directors Election of Officers Meeting**Whidbey**

6:15pm to 7:00pm

Reception**Grand Foyer**

7:00pm to 8:30pm

Dinner and Conference Wrap-up**Fifth Avenue**

Wednesday, May 8

7:00am to 8:30am

Breakfast and Facilitated Roundtable Discussions**Fifth Avenue**

- Subjects:*
- Energy and Environmental Issues – discussion led by Daniel Misleh, Catholic Coalition On Climate Change
 - Catholic Cemetery Management – discussion led by Gregory Fleck, Diocese of Springfield in Illinois
 - School and Parish Security Issues – discussion led by Janis Balentine, Diocese of Colorado Springs

9:00am to 12:00pm

Optional Tour of Diocesan Sites – Pre-registration RequiredOur Lady of Guadalupe

In 2011 this parish dedicated a new multi-purpose facility. This project was done as part of phased development with a new parish office building. This facility serves both as a parish hall, gymnasium and reception/meeting area. Two unique characteristics of the project are the dual use of the stage area which serves for both theatrical productions and a reception/meeting area along with parish's strong desire to create a "Green Building" through pursuit of LEED certification. Currently they are working with the Bonneville Power Administration on the installation of a photovoltaic system, which is scheduled for late spring 2013.

St. James Cathedral

For more than 100 years, St. James has stood atop Seattle's First Hill. After the initial construction, St. James has had three notable building projects. In 1916, a heavy snow storm collapsed part of the roof into the nave. In 1950 in honor of the centenary of the Diocese, the Cathedral was thoroughly refurbished. Lastly, on Easter Monday, April 8, 1994, work began on a more thorough and significant renovation of the Cathedral. The goal of the renovation was to change the focus of the liturgical action to the midst of the assembly in response to the liturgical reforms of the Second Vatican Council. This was achieved, in large part, by moving the altar to the center of the space. Surprisingly, this may well have been the original intention of Heins and LaFarge in designing the Cathedral. A Seattle Times newspaper article of December 10, 1905, describing the future Cathedral, says: "Under the great center dome will stand the altar." Though the first high altar of the Cathedral was located at the East apse of the Cathedral, St. James is in design uniquely suited to the central altar, the east and west naves are of equal length with the transept at the exact midpoint of the building.

The Chapel of St. Ignatius at Seattle University

Architect Steven Holl chose "A Gathering of Different Lights" as the guiding concept for the design of the Chapel of St. Ignatius. This metaphor describes Seattle University's mission and it also refers to St. Ignatius vision of the spiritual life as comprising many interior lights and darkness's, which he called consolations and desolations.

Holl conceived of the chapel as "seven bottles of light in a stone box," with each bottle or vessel of light corresponding to a focal aspect of Catholic worship. Light passes through each bottle in a specific area of the building to define physical and spiritual spaces with pools of clear and colored light.

KEYNOTE ADDRESS

Archbishop Peter Sartain

Archbishop Peter Sartain was born in Memphis, Tennessee.

On July 15, 1978, he was ordained to the priesthood for the Diocese of Memphis.

Pope John Paul II appointed Archbishop Sartain Bishop of Little Rock, Arkansas, on January 4, 2000. He was ordained on March 6, 2000, and took as his episcopal motto: "Of You My Heart Has Spoken" (Psalm 27:8). He was appointed Bishop of Joliet, Illinois, by Pope Benedict XVI on May 16, 2006, and was installed on June 27. On September 16, 2010, he was appointed Archbishop of Seattle and was installed on December 1, 2010.

Archbishop Sartain currently serves as a member of the Subcommittee on Hispanic Affairs and the Ad Hoc Committee for Religious Liberty for the United States Conference of Catholic Bishops. He was recently elected secretary of the Conference, and his three-year term will commence in November 2012.

KEYNOTE ADDRESS

Rick Fersch

Rick Fersch is the Executive Director of the office of Stewardship and Development for the Archdiocese of Seattle. However, before joining the Archdiocese, Rick was the CEO of Eddie Bauer, the outdoor gear and clothing store.

Both Eddie Bauer and Rick earned numerous awards and national distinctions, including being named "Employer of Choice" by Fortune, Business Week and Working Mother magazines, as well as being named twice as one of "America's Top 100 Companies to Work For".

Rick is rooted in a strong faith and a belief in the power of teamwork. His deep commitment to the Catholic Church and to community service is evident through his many activities. He and his wife, Patti, have four children and live in Mercer Island, Washington.

TRACK 1

Kevin Broderick

Kevin Broderick is a registered architect in Washington State and Idaho. He studied architecture at the University of North Carolina at Charlotte. Since 1986, he has been the principal architect at Broderick Architects on a variety of ecclesiastical, commercial, institutional, multifamily, single family residential and industrial projects. His responsibilities include all phases of design, client communication, production, team management, consultant and jurisdictional coordination. Kevin is currently a member of the Archdiocesan Building Commission for the Archdiocese of Seattle.

TRACK 1

Steve Porter

Steve Porter is a strong problem-solver who enjoys finding creative solutions to design challenges, he is also drawn to complex, complicated projects. He brings 27 years of experience to Coughlin, Porter and Lundeen, providing civil engineering and master planning services for projects that include cutting-edge green site plans, complicated urban infills and large, multi-phased campus developments. Steve's commitment to service has given him the opportunity to provide civil engineering services on a variety of faith-based facilities throughout the region. Steve understands the importance that his faith-based clients place on creating welcoming spaces that meet their needs and promote their mission through inspiring design. An advocate of sustainable design long before it became mainstream, Steve is known throughout the industry as the leader in creative design practices. He has helped develop more than 70 projects that are either LEED certified by the U.S. Green Building Council or currently in review. His practical and realistic solutions reflect Coughlin Porter and Lundeen's belief that sustainability is - and always has been - a component of quality design and company infrastructure.

TRACK 1

Rick Tomkins

Rick Tomkins, PE, puts over 25 years of experience to work managing Triad Associates' civil engineering department. His knowledge is extensive in project management, roadway design, hydraulic and hydrologic analysis, sanitary sewer and water systems engineering, and low impact development techniques. This experience coupled with his familiarity with regional codes and design standards, and construction means and methods, promotes a thorough understanding of project constraints / opportunities and results in creative and cost-effective design solutions. Rick directs a talented team of deeply experienced professional engineers, designers and cad technicians. In addition, Rick is currently a member of the Archdiocesan Building Commission for the Archdiocese of Seattle.

TRACK 2

Ron Bovard

Ron Bovard received his B.A. in 1971 and became an independent artist. Carnegie Museum exhibited Ron's work for the first time in 1972. Ron went on to have over 25 one man shows in the U.S.A. and Europe. As art director for Creative Glass Works International in the early 1980's, Ron helped develop the abrasive water jet cutting technology that is used in the glass industry today. In 1985, Ron started Bovard Studio stained glass. Over the past 20 years, Ron has assembled a team of leading stained glass artists and craftspeople at Bovard Studio Inc. He has designed a U.S. patented vented framing system designed for the conservation of stained glass windows. Ron has been the subject of three PBS television shows. He is the author of the book "WINDOWS FOR THE SOUL" (currently in its second edition) published by Wardell Publications and has written numerous articles on stained glass windows and stained glass restoration.

TRACK 3

Rick Casault

Rick Casault, president of Casault Engineering in Seattle, WA since 1994, specializes in development of commissioning process master plans and commissioning process services for new and existing facilities. He served on ASHRAE committees that wrote commissioning process guidelines. He serves on other ASHRAE commissioning committees, wrote two ASHRAE commissioning courses, and is co-author of The Building Commissioning Handbook. He teaches building science courses at a local college and at the University of Wisconsin Extension. He is developing new MasterSpec specification sections related to the commissioning process. As a University of Washington facilities engineer, he led the development and implementation of the commissioning process for that university's facilities. Rick received the 2002 Benner Award for efforts to make commissioning "business as usual". He was the founding president of the Building Commissioning Association.

TRACK 4

William Endelman

William Endelman is an Architect and the Principal of Endelman & Associates PLLC (E&A), a consulting firm specializing in accessibility consulting including the Americans with Disabilities Act (ADA), Fair Housing Act (FHA), UFAS, and Building Code accessibility compliance. E&A has been providing consulting services nationally for 18 years, including plan reviews, ADA- FHA-Code surveys, and litigation consulting, and is a recognized expert in the field. Mr. Endelman also has over thirty-five years of professional experience in facility accessibility, architectural business operations, project management, and architecture in high level management positions. Mr. Endelman has been an Accessibility Consultant for over 600 clients, including national residential developers, architects, attorneys, real estate asset management clients, corporations, banks, institutional clients, school districts, and public sector entities. He has been a litigation consultant to both the U.S. Department of Justice and enforcing agencies in multiple states, as well as for defendants. Prior to founding E&A, his background centered on large scale architectural project management, including the U.S. Embassy Complex in Moscow.

TRACK 5

Rod Stewart

Rod Stewart is an internationally recognized expert on the problems of fragile plaster in historic buildings. He has developed a variety of plaster assessment and treatment methods that deliver economical preventive maintenance and often eliminate the need for costly scaffolding in church interior restoration. Trained in traditional carpentry, Mr. Stewart developed a passion for resolving plaster issues while working on buildings owned by the Ontario Heritage Foundation. In 1988, he formed Historic Plaster Conservation Services Limited (HPCS) to pursue opportunities in the very specific field of architectural plaster conservation. The HPCS scientific approach and methods have been used in most of Canada's distinguished heritage buildings. In 2010, HPCS began offering its services in the United States through a partnership agreement with John Tiedemann Inc. (JTI), a well-respected church painting and restoration firm based in New Jersey. JTI has used HPCS plaster treatment methods, tools and products to save the historic interiors of a number of important American heritage buildings, most notably the Church of Our Lady of the Scapular - St. Stephen in New York City, where frescos by the great Constantino Brumidi adorn the walls. Leading preservation architects and heritage consultants specify the HPCS approach whenever important historic plaster may be at risk.

TRACK 6

R. Gregory Turner

R. Gregory Turner, AIA, LEED AP is the President of Turner Duran Architects, LP, a Houston-based company he founded in 1984. The firm specializes in religious architecture and consistently ranks among the top firms in Texas in the Worship / Cultural category, as ranked by McGraw-Hill's Texas Construction magazine.

Prior to starting his own practice, Greg apprenticed at some of the most renowned firms in the nation, including Philip Johnson / John Burgee Architects, and I.M. Pei & Partners, both in New York City. He made significant contributions to "landmark" projects such as the AT&T Corporate Headquarters in New York City (Philip Johnson / John Burgee Architects project), a 36-story tower that is noted as the first major "post-modern" style structure in the world. He was also the architectural designer of the 12-block long granite "carpet" pattern incorporated in Denver's 16th Street Mall (I.M. Pei & Partners).

A published author of books and a contributor to national magazines such as Architectural Record and Design Cost & Data magazine, Greg's treatises deal with the broad scope of issues involved in the design and construction industries, as well as historical issues and trends related to the endeavor of building.

Greg's educational background includes two degrees in architecture from the Massachusetts Institute of Technology ("MIT"). He furthered his education by earning a master's degree in business administration from the University of Houston.

Through leadership roles in his church, as well as in chambers of commerce, the MIT Alumni Association, and other organizations, Greg has led strategic assessment teams to address long term issues. He brings process knowledge as well as leadership capabilities developed in these volunteer endeavors to the benefit of his clients during "programming" and strategic planning efforts conducted by the firm. Among his recent leadership roles in this area are: Archdiocese of Galveston-Houston, St. Mary's Seminary Strategic Plan (2009); MIT Alumni Association, Long Range Strategic Plan (2010-2011); West I-10 Chamber of Commerce, Long Range Strategic Business Plan (2008-2011); and MIT Alumni Association, AA Campus Center Vision Plan (2007).

TRACK 7

Jerry Mendelsohn

Jerry M. Mendelsohn has been in the architectural / construction profession for the last twenty-eight years. Jerry graduated from UCLA and attended the Southern California Institute of Architecture in Los Angeles where he studied architecture and design. For eight years, he worked for the architectural firms of Robbins and Bown, Randall Duell and Associates and LDC Design and Construction, all located in the Los Angeles area. In addition, Jerry became a licensed general contractor designing, building and overseeing commercial and residential projects. He was sought out to become a professional architectural / engineering representative for a number of different manufacturers of building products. Many of the products he represented are required by the American Disabilities Act. He also represented Kawneer, a division of Alcoa, and Bobrick Washroom Accessories, one of the world leading manufacturers of its kind. His vast experience and training led him to his current position as the National Architectural Representative for Custom-Bilt Metals. Presently, he is educating and promoting the use of standing seam metal roofs and metal architectural components to architects, general contractors, property and facility managers and structural engineers.

TRACK 8

Martin V. Rambusch

Martin V. Rambusch, the Chairman of the Board of Rambusch Decorating Company, was awarded a Bachelor of Arts from Tulane University and a Master of Science from the Columbia School of Architecture, with a specialty in preservation. He is currently the manager of the Rambusch Studios, and is project manager of the crafts division of the company that is involved with the conservation and preservation of church and public interiors. He handles the creation of church interiors, as well as working in the trades of stained glass, metal, stone, and wood.

TRACK 8

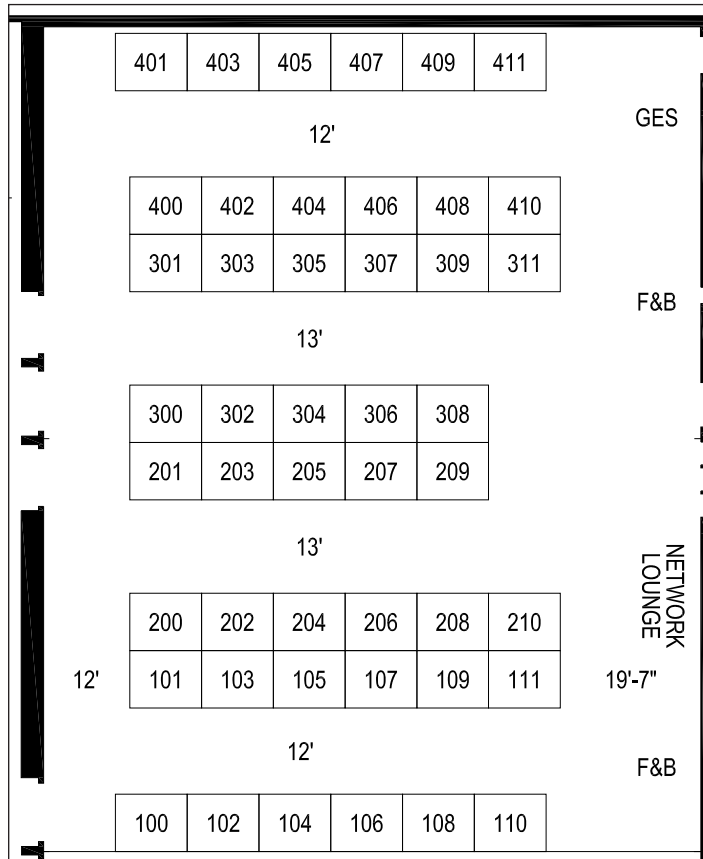
Edwin P. Rambusch

Edwin P. Rambusch is a project manager at Rambusch with an emphasis in custom and restoration projects. He received a Bachelor of Arts in Fine Arts from Bates College and a Masters in Lighting Design from the Parsons School of Design. He is a member of the DLF and IES, where he serves on the Progress Committee. Some of his recent lighting projects include Conde Nast lunchroom; Jil Sander Corporate Headquarters, Hamburg, Germany; Sage Chapel at Cornell; The Getty Decorative Arts Museum; and the U.S. Naval Academy - Memorial Hall.

TRACK 9

Brian Miller

Brian Miller is a licensed civil engineer and is currently the managing director for business development at the Precast / Prestressed Concrete Institute. He is a highly sought-after speaker on high performance concrete, sustainable concrete design and architectural precast concrete.



Booth	Exhibitor	Booth	Exhibitor
311	Arthur Vincent Company	309	John Tiedemann Inc.
305	Associated Crafts	303	Ludowici Roof Tile
410	BCDM Architects	400	Lutron Electronics
306	Belfor Property Restoration	408	Lyn Hovey Studio, Inc.
104	Best Bath Systems	107	Mid-Continental Restoration Company
106	BMS CAT Disaster Restoration & More	202	New Holland Church Furniture
203	Botti Studio of Architectural Arts, Inc.	201	Rambusch Decorating Company
210	Bovard Studio Inc.	200	Renaissance Roofing, Inc.
206	Civil and Environmental Consultants Inc.	105	Ri-Ky Roofing, LLC
204	Conrad Schmitt Studios, Inc.	102	Rohn and Associates Design Inc.
100	Cooperativa Ceramica D' Imala – North America	108	Rose Paving Company
110	Daprato Rigali Studio	209	Sauder Worship Seating
304	EMG	300	Servpro Industries, Inc.
301	Evergreen Architectural Arts	405	Siplast
205	Facility Tree	404	STRUCTURAL
401	Foreman Group	302	Stuart Dean Company
207	Fox Blocks by Airlite Plastics Co.	403	The Garland Company, Inc.
103	Granda Liturgical Arts	208	The Verdin Company
406	HGA Architects and Engineers	409	Turner Duran Architects
407	Holsag Canada	111	Universal Restoration Services
307	Inspire Roofing Products, A Division of the Tapco Group	308	Western Construction Group
101	International Masonry Institute	411	Willet Hauser Architectural Glass, Inc.
402	Jaeger, Nickola and Associates, LTD.	109	Wiss, Janney, Elstner Associates, Inc.

Arthur Vincent Company

Andrew Vincent
President
16 S. Franklin St.
Nyack, NY 10960
845-353-0348
Fax: 845-353-4284
Andrew@ArthurVincentCompany.com

Associated Crafts

John Phillips
President
2487 S. Gilberts Rd. #106-451
Gilberts, AZ 85295
888-503-1184
Fax: 888-801-9551
info@restoreglass.com

BCDM Architects

Jim Dennell
President
1015 N 98th St., #300
Omaha, NE 68116
402-384-6428
Fax: 402-391-8721
jdennell@bcdm.net

Belfor Property Restoration

Dave Cripe
Regional Manager
2425 Blue Smoke St. S.
Fort Worth, TX 76105
817-535-6793
Fax: 817-536-1167
dave.cripe@us.belfor.com

Best Bath Systems

Cal Osborn
Sales Manager
723 Garber St.
Caldwell, ID 83605
208-955-7394
Fax: 208-342-6823
leannd@best-bath.com

BMS CAT Disaster Restoration & More

Tim C. Coumbe
UP Commercial Segment
75 Maiden Lane, Suite 509
New York, NY 10038
646-640-7269
tcoumbe@bmecat.com

Botti Studio of Architectural Arts, Inc.

Ettore C. Botti
President
919 Grove St.
Evanston, IL 60201
847-869-5933
Fax: 847-869-5996
botti@bottistudio.com

Bovard Studio Inc.

Ronald Bovard
Owner
2281 Highway 34 East
Fairfield, IA 52556
641-472-2824
Fax: 641-472-0974
info@bovardstudio.com

Civil and Environmental Consultants Inc.

Gregory P. Quatchak
Founding Principal
333 Baldwin Rd
Pittsburg, PA 15205
412-429-2324
Fax: 412-429-2114
gquatchak@cecinc.com

Conrad Schmitt Studios, Inc.

Kevin Grabowski
Project Manager
2405 S. 162nd St.
New Berlin, WI 53210
262-786-3030
Fax: 262-786-9036
kevin@conradschmitt.com

Cooperativa Ceramica D' Imala- North America

Kevin McGrath
Director of National Accounts
8975 NW 25th St.
Miami, FL 33172
630-918-7526
kevin.mcgrath@ccimola.it

Daprato Rigali Studio

Robert Rigali
Vice President
6030 N Northwest Hwy.
Chicago, IL 60631
773-763-5511
Fax: 773-763-5522
info@dapratorigali.com

EMG

Drew Weitzel
Business Development Associate
222 Schilling Circle, Suite 275
Hunt Valley, MD 21031
800-733-0660, ext 7539
Fax: 410-785-6220
dweitzel@emgcorp.com

Evergreen Architectural Arts

Emily Sottile
Marketing Manager
450 West 31st St.
New York, NY 10001
212-244-2800
Fax: 212-244-6204
esottile@evergreene.com

Facility Tree

John P. Conlon
President
780 W. Army Trail Rd.
Carol Stream, IL 60188
630-293-9672 /888-310-3339
Fax: 888-743-9996
jpconlon@facilitytree.com

Foreman Group

Phillip Foreman
President and CEO
PO Box 189, 525 West New Castle St.
Zelienople, PA 16063
724-452-9690
Fax: 724-452-0223
phillip.foreman@foremangroup.com

Fox Blocks by Airlite Plastics Co.

Mike Kennaw
VP Sales
6110 Abbott Dr.
Omaha, NE 68110
877-369-2562
Fax: 402-408-5099
mikek@foxblocks.com

Granda Liturgical Arts

Manuel Suarez
Director of Sales
811 W. Evergreen Ave, Suite 200
Chicago, IL 60642
312-944-9905
Fax: 312-944-9906
mrsuarez@usagranda.com

HGA Architects and Engineers

John Justus
Principal/VP
1410 Rocky Ridge Dr., Suite 250
Roseville, CA 95661
916-787-5125
Fax: 916-784-7783
jjustus@hga.com

Holsag Canada

Blaine Kitchen
Sales Manager
164 Needham St.
Lindsay, ON Canada K9VSR7
705-878-1970
Fax: 705-878-1864
michelle@holsag.com

Inspire Roofing Products A Division of the Tapco Group

Dennis Paliaga
National Sales Manager
29797 Beck Rd.
Wixom, MI 48393
248-668-6400
jessica_pluta@tapcoint.com

International Masonry Institute

David Sovinski
National Director of Industry Development
42 East Street
Annapolis, MD 21401
410-280-1304
Fax: 301-261-2655
dsovinski@imiweb.org

Jaeger, Nickola and Associates, LTD.

David Kuhlman, AIA, ALA, NCARB
President
350 S. Northwest Hwy., Suite 106
Park Ridge, IL 60068
847-692-6166
Fax: 847-692-2002
kuhlman@jaeger-nickola.com

John Tiedemann Inc.

Ray Tiedemann
President
330 Belleville Tpk.
North Arlington, NJ 07031
201-998-0894
Fax: 201-991-3419
johntiedemann@comcast.net

Ludowici Roof Tile

Adam Boswell
Direct Sales Coordinator
P.O. Box 69
New Lexington, OH 43764
800-945-8453
Fax: 740-342-5229
adam.boswell@ludowici.com

Lutron Electronics

Brian Dauskurdas
Director, Total Building Solutions
7200 Suter Rd.
Coopersburg, PA 18036
610-282-3800
Fax: 610-282-6765
bdauskurdas@lutron.com

Lyn Hovey Studio, Inc.

Lyn Hovey
President
140 East Main St.
Norton, MA 02766
617-288-6900
Fax: 508-622-1318
officemgr@lynhoveystudio.com

Mid-Continental Restoration Company

Frank Halsey
President
401 Hudson Rd.
Fort Scott, KS 66701
620-223-3700
Fax: 620-223-5052
frank_halsey@midcontinental.com

New Holland Church Furniture

Danny Groves
313 Prospect St.
New Holland, PA 17557
717-354-4521
Fax: 717-354-2481

Rambusch Decorating Company

Martin Rambusch
Chairman of the Board
Director of Glass Studio
160 Cornelison Ave.
Jersey City, NJ 07304
201-333-2525
Fax: 201-860-9999
martinr@rambusch.com

Renaissance Roofing, Inc.

Robert Raleigh
President
2231 Hawkey Dr.
Belvidere, IL 61008
800-599-5695
Fax: 815-547-1425
rwr3@renroof.com

Ri-Ky Roofing, LLC

Tony Zahtila
Owner
3815 S. Othello, Suite 185
Seattle, WA 98118
206-261-1781
tony.zahtila@rikyroofing.com

Rohn and Associates Design Inc.

Kathleen Maglicco
Liturgical Designer
719 S. Flores, Suite 200
San Antonio, TX 78204
210-231-0377
Fax: 210-231-0366
kmaglicco@rohndesign.com

Rose Paving Company

Jessica Bordelon
Marketing Director
7300 W. 100th Pl.
Bridgeview, IL 60455
888-773-ROSE
Fax: 708-430-9100
jbordelon@rosepaving.com

Sauder Worship Seating

Crystal Rodriguez
Worship Product Manager
930 W. Barre Road
Archbold, OH 43502
419-446-3534
Fax: 419-446-3697
crodriguez@sauderworship.com

Servpro Industries, Inc.

John Sooker
National Accounts Division Manager
801 Industrial Blvd.
Gallatin, TN 37066
615-451-0200
Fax: 615-451-4861
jsooker@servpronet.com

Siplast

Gretchen Dyer
District Manager
3143 Yupon Street
New Orleans, LA 70119
504-947-4920
USGDY@ICOPAL.COM

STRUCTURAL

Ian Wienholt
7455 New Ridge Rd., Suite T
Hanover, MD 21076
410-850-7000
Fax: 410-850-4111

Stuart Dean Company

Bill Batz
Religious Facilities Market Manager
43-50 10th St.
Long Island City, NY 11102
646-235-9862
Fax: 718-472-1327
bbatz@stuartdean.com

The Garland Company, Inc.

Logan DeWitt
3800 East 91st St.
Cleveland, OH 44105
800-321-9336
Fax: 216-641-0633

The Verdin Company

Bob Verdin
444 Reading Rd.
Cincinnati, OH 45202
513-241-4010
Fax: 513-241-1855
bverdin@verdin.com

Turner Duran Architects

Greg Turner
President
333 Cypress Run, Suite 350
Houston, TX 77450
281-497-1040
Fax: 281-497-7480
greg@turnerduran.com

Universal Restoration Services

Joe LaMotte
General Manager
390 Holbrook Dr.
Wheeling, IL 60090
847-325-1795
Fax: 877-505-6699
jlamotte@4universal.com

Western Construction Group

Dennis Ahrenhoersterbaeumer
VP Field Marketing
1637 North Warson Rd.
St. Louis, MO 63132
314-427-6733
Fax: 314-593-9924
dennisa@westerngroup.com

**Willet Hauser Architectural
Glass, Inc.**

Jim Hauser
Vice President
PO Box 587
Winona, MN 55987
507-457-3500
info@willethauser.com

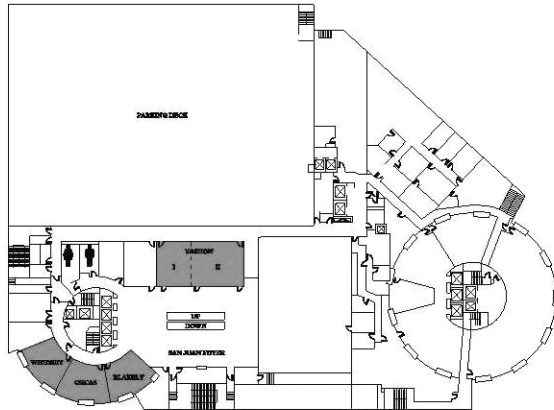
**Wiss, Janney, Elstner
Associates, Inc.**

Richard J. Kristie
Principal
330 Pfingsten Road
Northbrook, IL 60062
847-753-6576
Fax: 847-291-4813
rkristie@wje.com

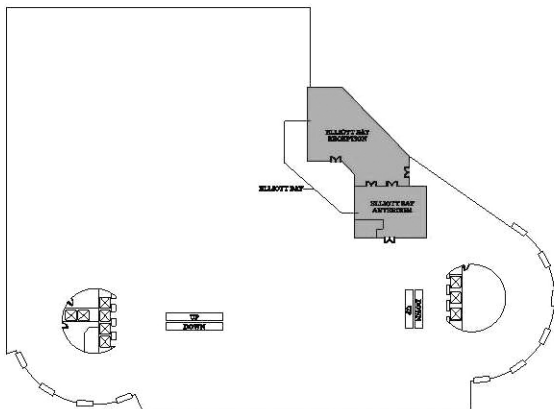
**CCFM Wishes to acknowledge the following firms for
their generous support of the CCFM 2013 conference:**

Belfor Property Restoration
Bovard Studio Inc.
Catholic Mutual Group
Sauder Worship Seating
Servpro Industries, Inc.
Western Construction Group

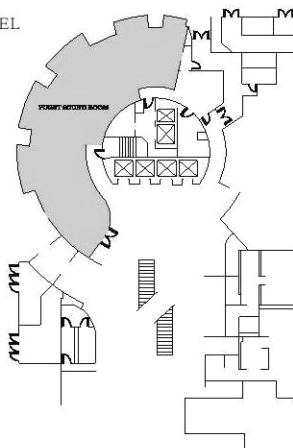
FLOOR PLANS



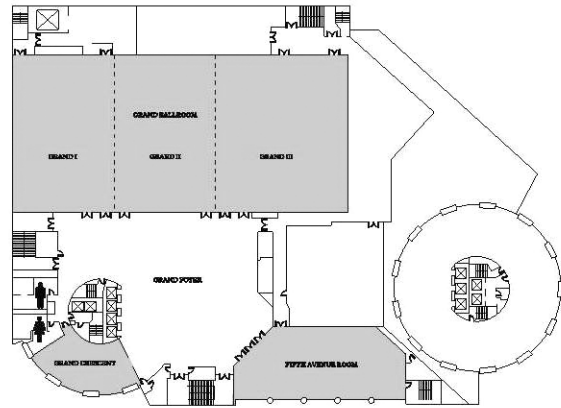
SAN JUAN LEVEL



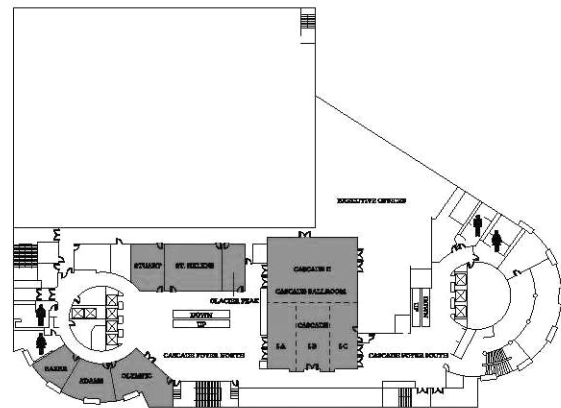
LOBBY LEVEL



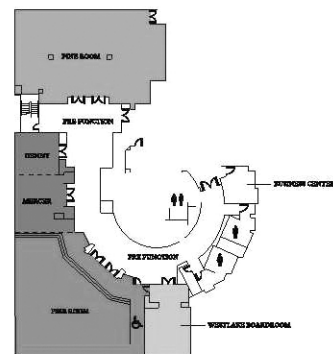
GRAND LEVEL



GRAND LEVEL



MEZZANINE LEVEL



WESTLAKE LEVEL



Riverfront Streetcars



St. Louis Cathedral

CCFM 2014 New Orleans, Louisiana



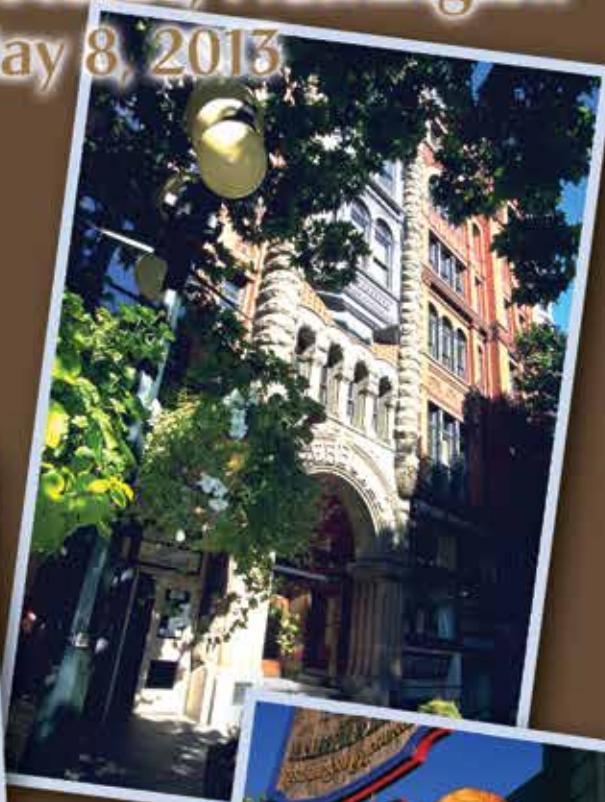
Joan of Arc statue.



Tugboat and Steamboat Natchez

Welcome to Seattle!

The Westin Seattle - Seattle, Washington May 6 - May 8, 2013



CCFM

CONFERENCE FOR
CATHOLIC FACILITY MANAGEMENT

Tom Richter – Executive Director

CCFM National Office • 20 Archbishop May Drive • St. Louis, Missouri 63119
Phone: 314-792-7002 • E-Mail: trichter@archstl.org

Photography provided by VisitSeattle.org